



Food District

@ weinland park



Background

- Industrial neighborhood, Southeast of OSU, two miles north of State Capitol
- Factories faded, prosperity plummeted, crime climbed
- Section 8, transience, poverty, health issues
- Hints of gentrification, outpouring of OSU and civic attention







HUD Planning Outcomes

- Environmental Site Analysis Report





HUD Planning Outcomes

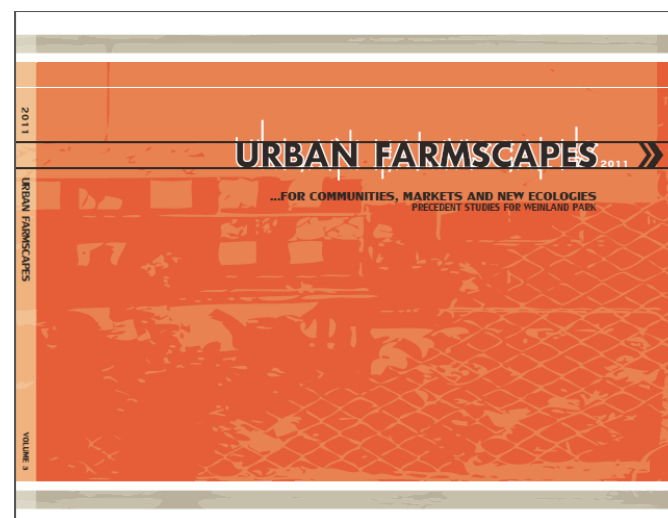
- Community Outreach (vulnerability)





HUD Planning Outcomes

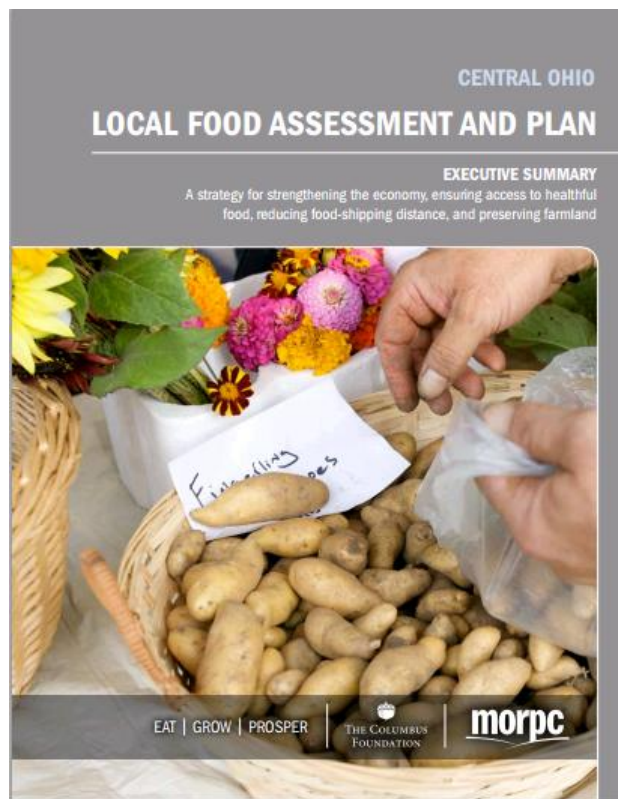
- Regulatory Barriers Report
- Funding committed to Road Diets for 4th & Summit
- Precedence Research Report



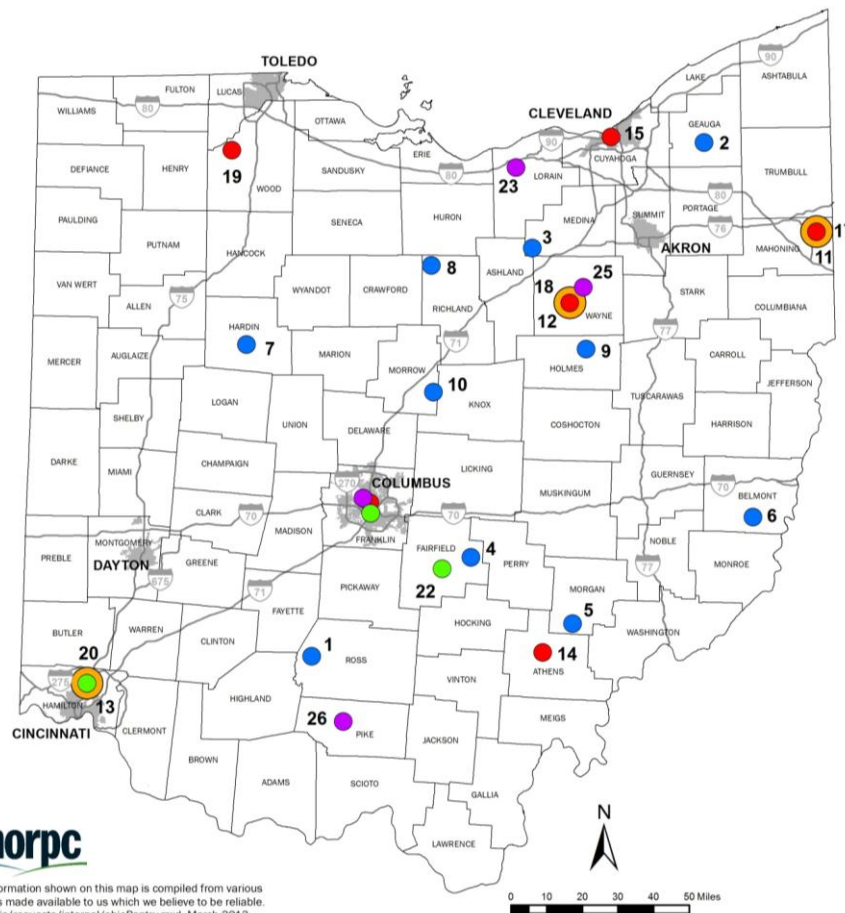


HUD Planning Outcomes

- Business Plan



Food Hubs in Ohio



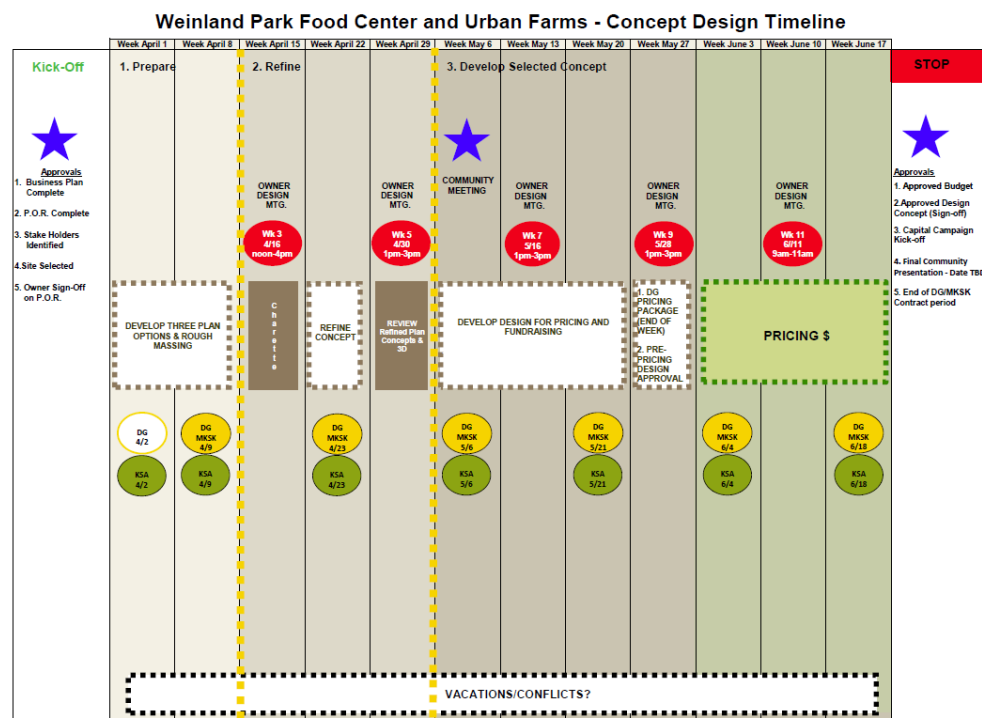
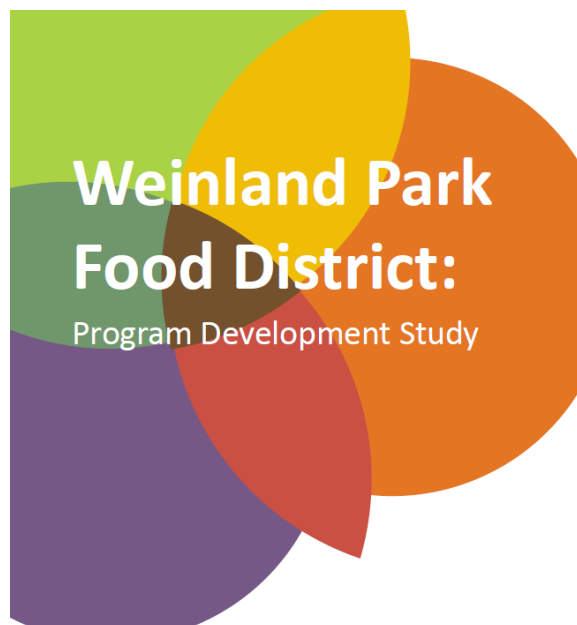
morpc

The information shown on this map is compiled from various sources made available to us which we believe to be reliable.
n:/arcgis/requests/internal/ohioPantry.mxd March 2013



HUD Planning Outcomes

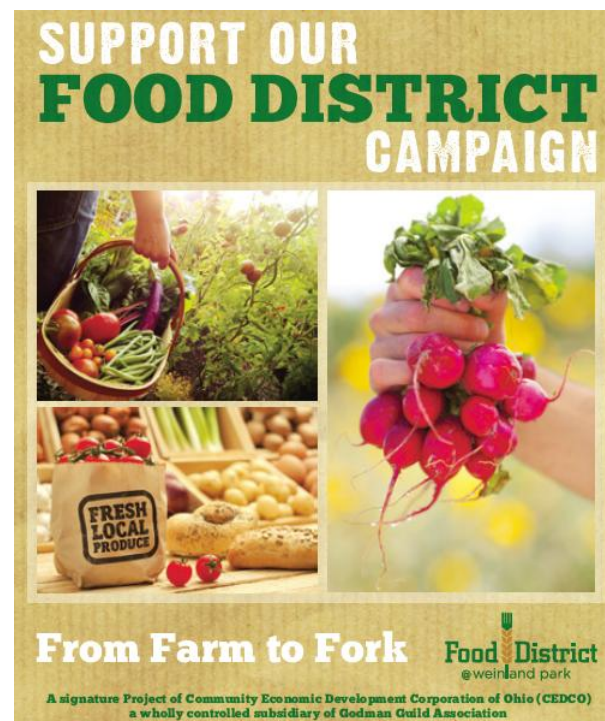
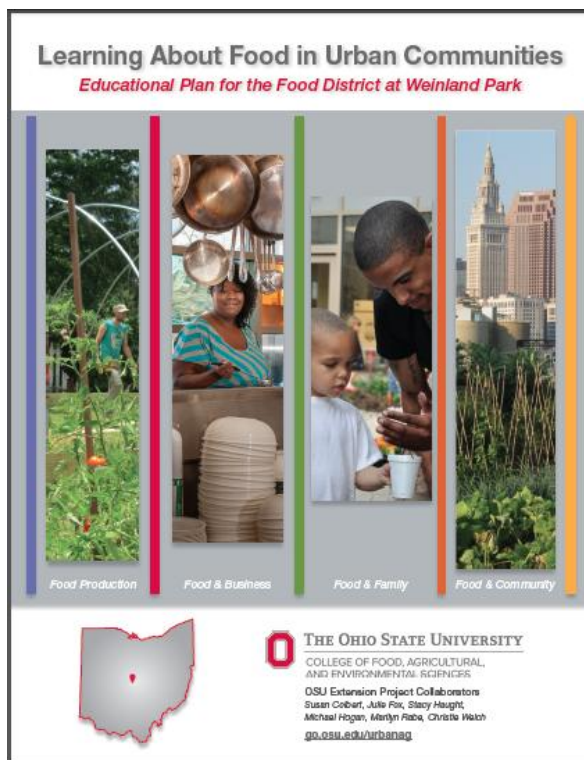
- Program of Requirements (POR)
- Schematic Design





HUD Planning Outcomes

- Education Plan
- Campaign Plan





**Economic
Impact**



**Health &
Nutrition**

**Community
Engagement**



At its core ...

Third
floor



Event Space

Second
floor



**Business Incubation & Services
Marketing Research
Classroom Space**

Ground
level



**Food Processing Center
Cash n' Carry
Community Co-op and Café**



Followed by ...



Food-related &
Community Education Space

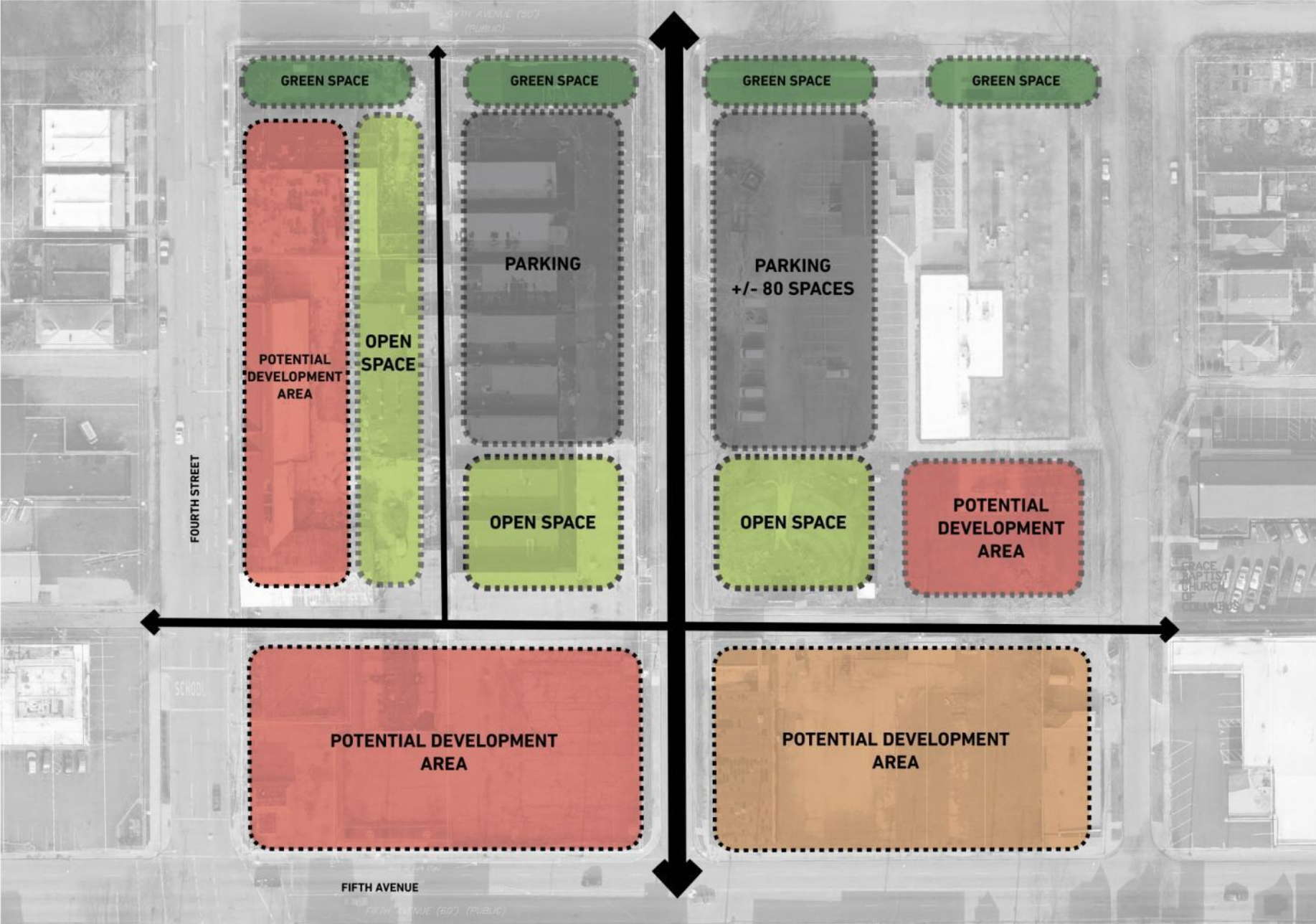


Flexible Business Space

A Community Campus



BASIC SITE FRAMEWORK



CONCEPTUAL SITE PLAN



NORTH/SOUTH INTERNAL STREET (LOOKING NORTH)



**WATER HARVESTING
AND DISTRIBUTION
STRUCTURE**

**ADA ACCESSIBLE
ABOVE-GROUND
PLANTERS WITH
HERBS/FRUITS/
VEGETABLES**

**SWING SPACE FOR
VENDOR SALES OR
LOADING**

**SOLAR CARPORT
STRUCTURES**

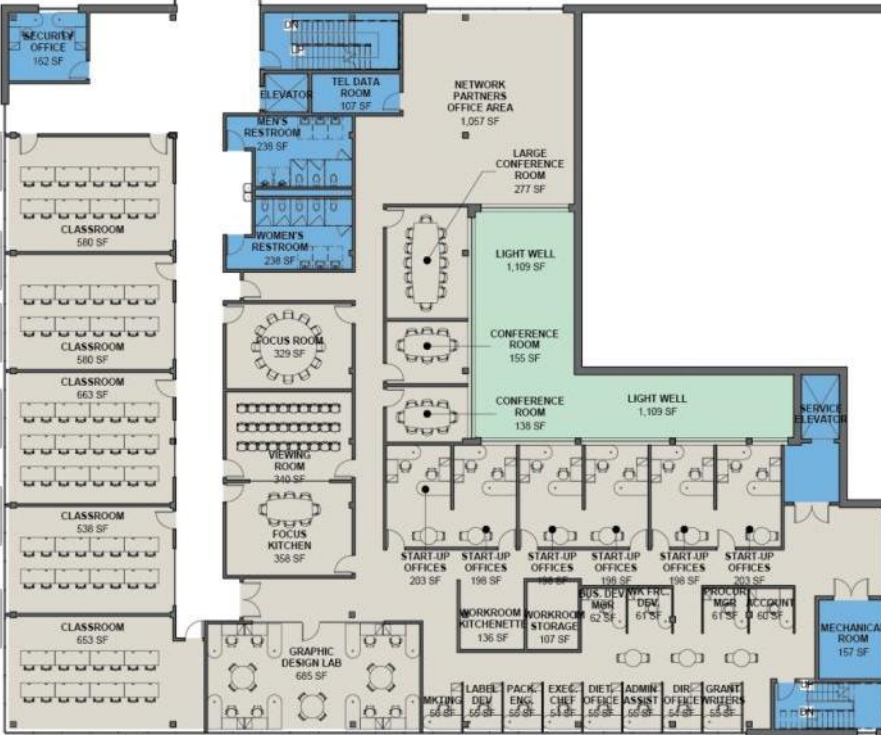
**PLAZA PAVING
(PEDESTRIAN)**

**PLAZA PAVING
(VEHICULAR)**

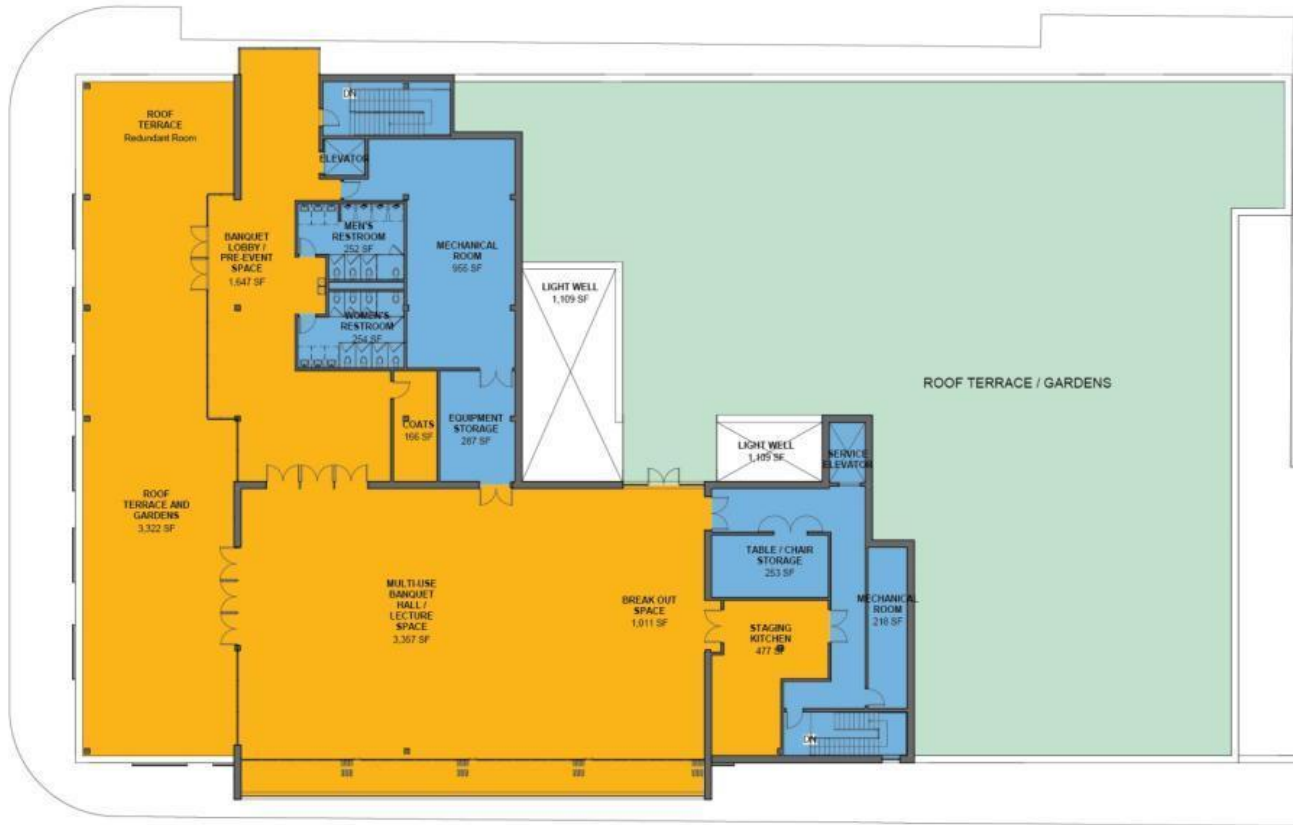
GROUND LEVEL *Food Processing Center Cash n' Carry Community Coop and Café*



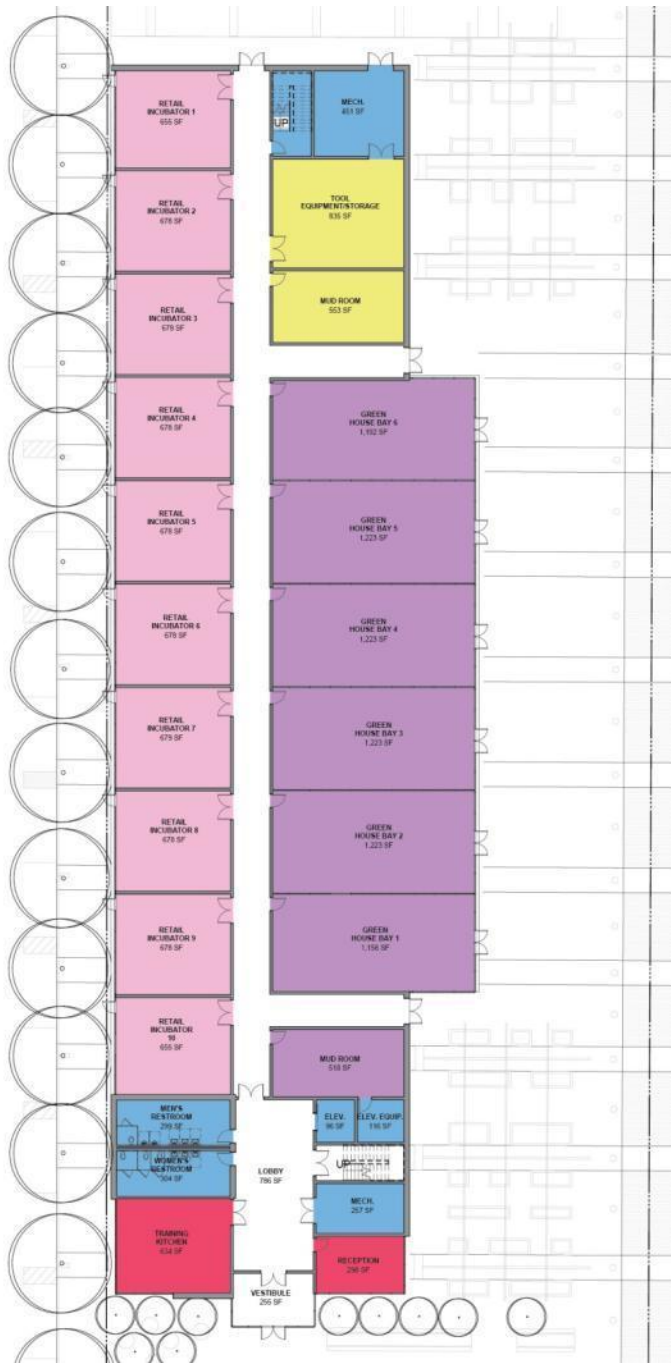
***Business Incubation & Services
Marketing Research
Classroom Space***



THIRD FLOOR *Event Space* *Garden Terraces*



GROUND LEVEL Flexible Business Space



SECOND FLOOR *Food-related & Community Education*





A Dynamic Vision for the Community





Food District

@ weinland park